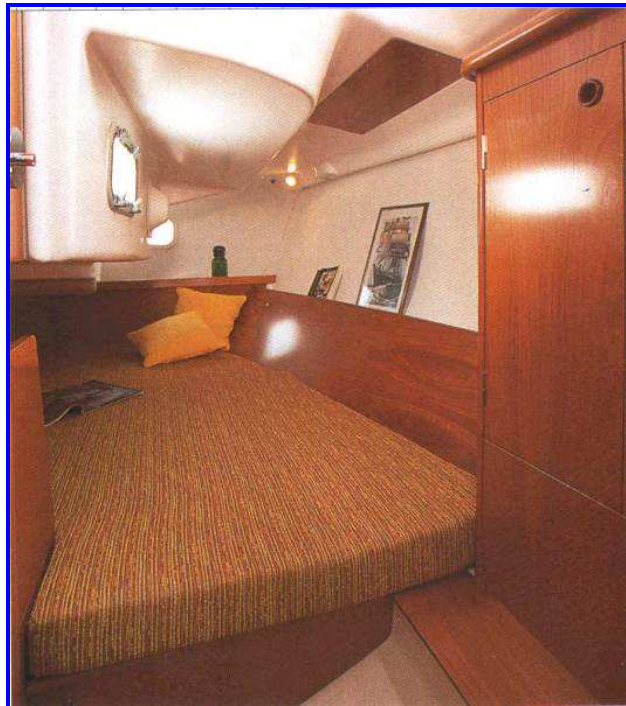
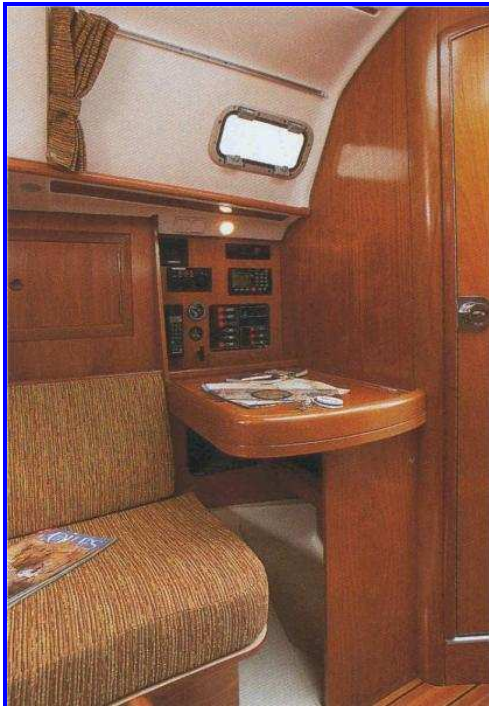
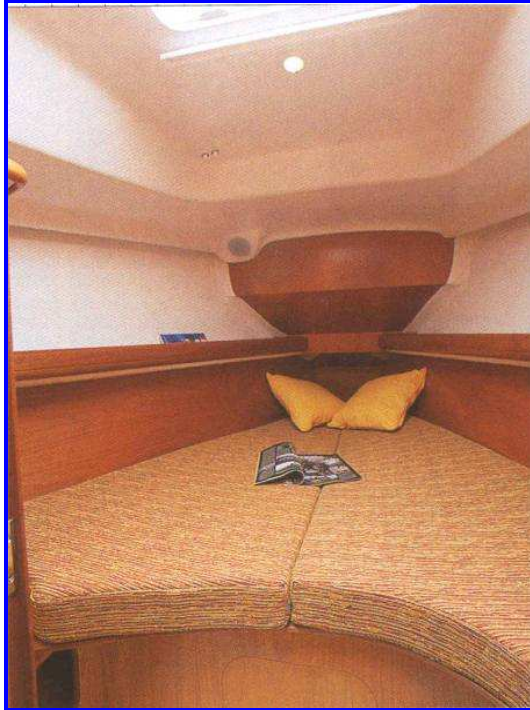
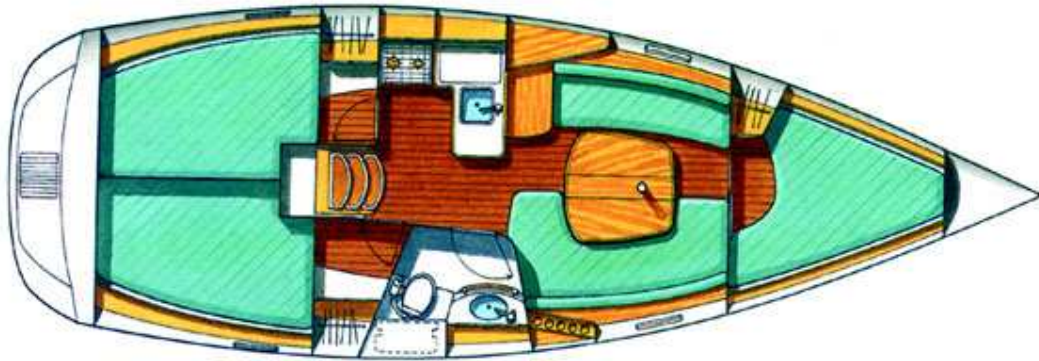


OCEANIS 331









BUILT: 2003  
LOA: 10,41 m  
BEAM: 3.79 m  
DRAUGHT: 1.60 m

ENGINE: 28 HP  
FUEL TANK: 70 l  
WATER TANK: 200 l  
M. SAIL + GENOA: 86 m<sup>2</sup>

BERTHS: 6 + 2  
CABINS: 3  
BATHROOMS: 1