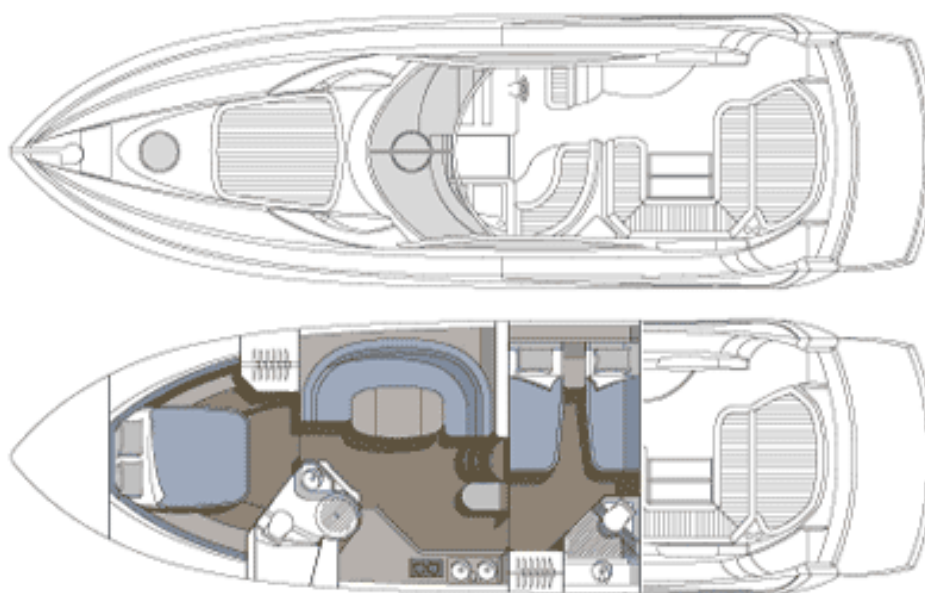




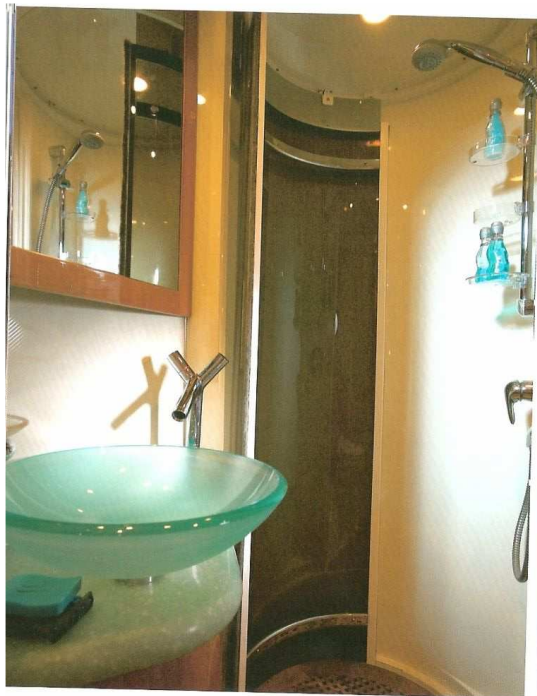
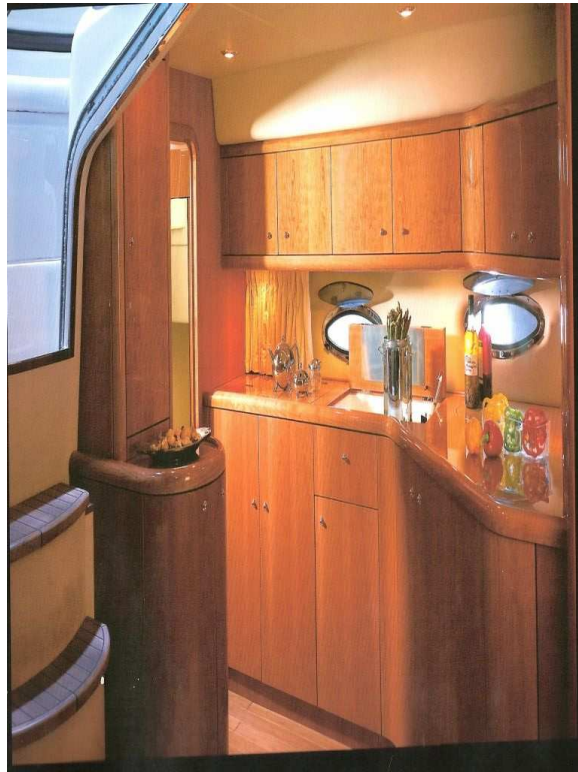
Sunseeker Portofino 46













Principal characteristics:

Engine: Twin Volvo TAMD 75P – 480hp
Length – overall (incl. pulpit) 14.76m 48'5"
Beam (max.) 4.20m 13'9"
Height above waterline
(incl. mast) 2.67m 8'9"
Fuel capacity 1310 litres
Fresh water capacity 375 litres
Fuel options Diesel
Maximum speed up to 33 knots*
Cruising speed 22 knots*
Range up to 200 miles

Facilities:

Air Conditioning
Alpine Cockpit CD/Radio System - CDA 9815RB and 6 Disc multi changer with SWR-1041D
10" Subwoofer & MRP-F240 amp & Four cockpit speakers
Hydraulic Telescopic gangway 2.5 mtrs with teak grating
Teak Cockpit Decking
Teak Side Decks
Television –Sharp 12 inch
Safe – 2 brick – with Digital lock
Saloon table to convert to occasional berth
Bed linen and towels provide